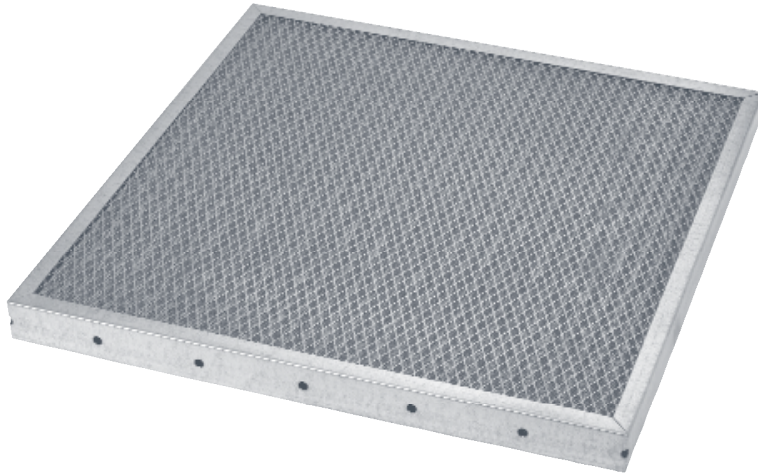


HM SERIES

MOISTURE ELIMINATOR



ELIMINATES MOISTURE / FILTERS AIRBORNE PARTICULATE AND COOLANT MIST



Application: The **HM SERIES MOISTURE ELIMINATOR** serves two important functions: its primary purpose is to collect water droplets and oil mist from the airstream and divert the liquid to an appropriate drain; its secondary function is as a washable, low efficiency particulate filter. The HM Series is built for use in outside air ducts, side-access housings and built-up filter banks. Select from two different metal alloys to obtain the best filter for your application.

Construction: The HM Series uses an 18 gauge metal frame to enclose the media pack which consists of multiple layers of corrugated and flat screen wire positioned vertically for efficient drainage. The pack is then placed between two layers of expanded metal, and is made to fit firmly inside the frame giving the HM Series filter exceptional strength and durability. The bottom of the filter has 3/8" diameter drain holes and the top has a label describing proper position for drainage and airflow. The frame is made with mitered corners and is secured with pop-rivet(s).

AVAILABLE IN TWO ALLOYS

HMG

Galvanized Steel

HMS

Stainless Steel

PRODUCT HIGHLIGHTS

- 18 Gauge Construction
- 98% Efficient
- Corrosion Resistant
- Available with Side Gaskets
- Drain Holes

FAST FACTS

LEAD TIME:

5 Days

MINIMUM ORDER:

No Minimum Order

SIZING OPTIONS:

Standard and Special Sizes

Please see reverse side for details.

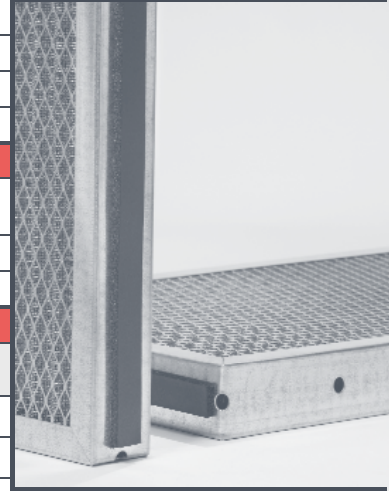
CLASSIFICATION:

UL 900 Class 1 and 2

Due to continuing research and development, we reserve the right to make modifications to any product.

HM SERIES ~ Filter Selection Chart

MODEL	HMG			HMS		
CONSTRUCTION						
Frame Alloy	18 gauge galvanized steel			18 gauge 304 stainless steel		
Frame Thickness	Nominal* 2"			Nominal* 2"		
Face Grids	28 gauge galvanized steel			28 gauge stainless steel		
Media	Aluminum screen wire			Stainless steel screen wire		
APPLICATION						
Application	Eliminate moisture Airborne particulate and coolant mist			Eliminate moisture Airborne particulate and coolant mist		
Environment	Normal environment			Corrosive environment		
Washability	Frequent and rigorous			Frequent and rigorous		
STANDARD SIZES						
Nominal* Dimensions (H x W x T)	Part Number	Carton Quantity	Carton Weight	Part Number	Carton Quantity	Carton Weight
12 x 24 x 2	HMG201224	6	54.0	HMS201224	6	54.0
24 x 12 x 2	HMG202412	6	54.0	HMS202412	6	54.0
24 x 24 x 2	HMG202424	6	90.0	HMS202424	6	90.0



SHOWN WITH SIDE GASKETS

HM SERIES NOTES

SIZING INFORMATION

* What does Nominal mean? Standard size filters are of a nominal dimension. This means the height, width and thickness dimensions are undercut by a certain amount. See below for the exact amount of undercut for each dimension.

- Three standard nominal size filters are available in a thickness of nominal 2" (actual 1-3/4") only and are 5/8" undercut on the height and width dimensions.
- Special size filters are available in a thickness of nominal 2" (actual 1-3/4") only. These filters must be purchased using the exact height, width and thickness dimensions to eliminate any confusion when ordering. *Link:* www.amfco.com/linkshvac/howto/specialsizes
- Tolerance height and width: $\pm 1/8"$
- Tolerance thickness: $\pm 1/32"$

CLASSIFICATION AND TEST NOTES

- The HM Series filter is listed as UL 900 Class 1 when used dry and UL 900 Class 2 when used with Filter Coat.
- Recommended final resistance is 0.5" W.G.

FILTER CLEANING AND COATING

- To clean a dirty filter, rinse it with a moderate-to-heavy stream of warm water. High-powered steam cleaning or chemical dips are unnecessary and not recommended. Re-spraying with Filter Coat after cleaning will help maintain the filter's efficiency.
- An HM Series filter is not supplied from the factory with filter adhesive coating. If desired, it may be sprayed before installation with Filter Coat, a water soluble adhesive and detergent. The adhesive helps to retain the airborne particulate, and when the filter is washed, the detergent helps to release the used adhesive and contaminants from the media pack.

OPTIONS

- The HM Series may be supplied with polyurethane gaskets on the vertical sides of the frame for use in side access housings. Specify "with gaskets" when ordering.

INSTALLATION CONSIDERATIONS

- The HM Series filter, when used to eliminate moisture, must be installed in HVAC systems with the TOP label facing upward to allow for proper drainage.
- When purchasing special size HM Series filters, specify if the drain holes should be on the short or long dimension of the frame.

ADDITIONAL INFORMATION

- The nominal 2" (actual 1-3/4") filter is 15-ply.

